

## How to Change the Default APP to open a pdf in Windows 10

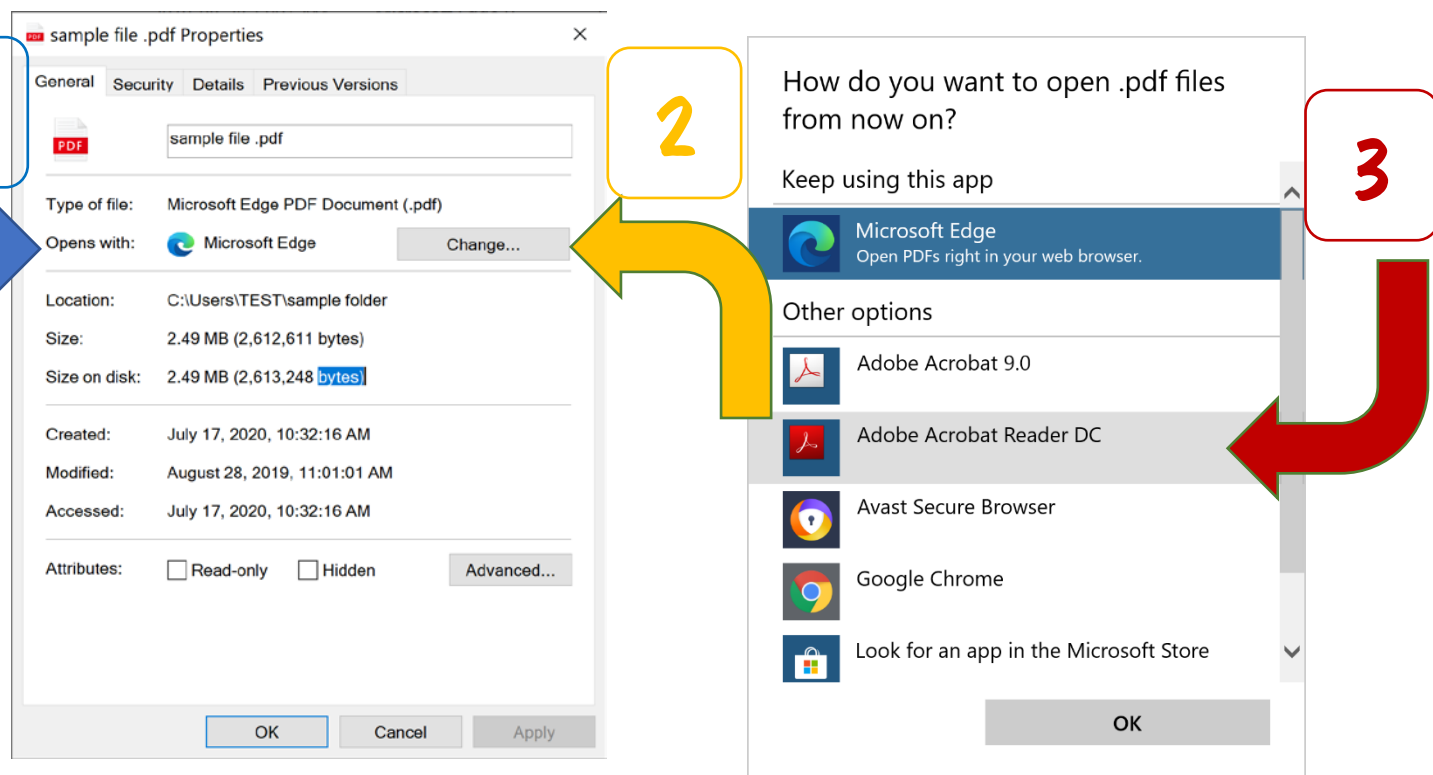
(from Microsoft Edge - default - to Adobe Reader)



1. Right click on the file name as it appears in File Explorer (above) to bring up the menu and select **PROPERTIES (bottom of the list)**

THE DEFAULT APP IS SET TO **MICROSOFT EDGE** (below LHS)

2. **Select CHANGE Button** to CHANGE TO ADOBE (below LHS)



3. In the Form (RHS Above) **Select Adobe Reader OR Adobe Acrobat** (if installed) and select OK

4. The default app will now appear as selected: **Adobe Reader** and the icon beside the file in file manager will **change to the ADOBE icon**.

